

Cruise ★ Craft

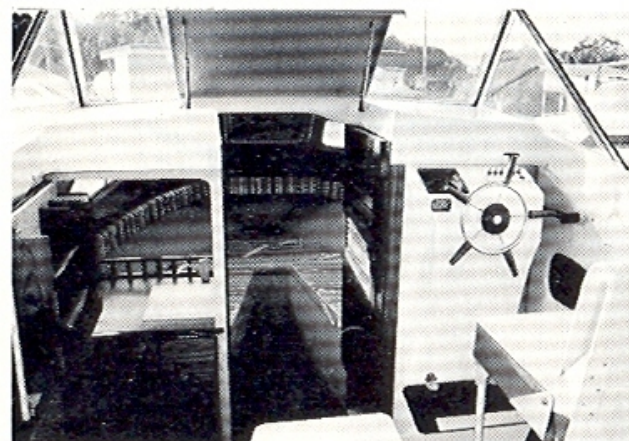
Displacement Cruiser



Manufactured by Nichols Bros.
1308 Lytton Road, Hemmant, Brisbane, Qld.
Telephone (07) 390 4967

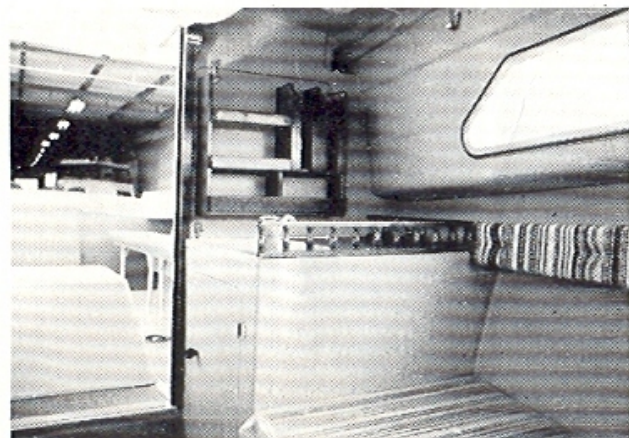


Presents
the sensational new
580D



An exclusive
19ft diesel
powered
displacement
half cabin
cruiser

Cruisecraft, one of Australia's largest and most respected fibreglass manufacturers, is proud to announce a totally new concept of powered cruiser designed for the 80's. The 580D is a smart stylish designed craft choc full of comfort features suitable either for daytime or overnight use. The hull is a modern hard chine deep keel displacement design as proven in Coastal trawlers. Unlike some round bilge semi planing hulls this hull design is exceptionally stable both at rest and underway and has no tendency to broach in following sea conditions. Its load carrying capacity and its manoeuvrability at slow and maximum speeds of around 13 kph can be achieved with less than 15HP. Fuel consumption will be approximately 2½ hours to the gallon.



SPECIFICATIONS

Overall Length	5.8m (119')	Waterline length	5.26m (17'3")
Maximum beam	2.44m (8'0")	Waterline beam	2.16m (7'1")
Draft	.45m (1'5½")	Freeboard aft	.57m (1'10½")
Cockpit size	2.59 x 1.86m	Height Keel to windscreen	2.29m (7'6½")
		Weight including 13HP motor approximately	1200kg (2600 lb.)

STANDARD EQUIPMENT INTERIOR

Two 6'3" upholstered bunks
Under bunk storage
Cabin accessory shelves
Completely separate enclosed marine toilet
Galley unit including sink & pump
Plate & cup rack
Louvered cabin door
Companion hatchway & hatch
Cabin & cockpit lighting
Cabin floor carpet
Large cockpit side pockets
3 Folding cockpit seats
Folding helmsman seat

Two folding tables
Console containing steering, controls & instruments
10 Gallon under floor water tank
10 Gallon under floor fuel tank
Whale gusher type bilge pump
12V 90A.H. H Duty battery
Diesel motor 13HP with flexible mountings
Copper stern tube
1" stainless shaft and bronze propellor
Flexible exhaust with water lock & muffler
Bronze balanced rudder
Sea cock

STANDARD EQUIPMENT EXTERIOR

Heavy Duty brass bollards
Heavy Duty C.P. brass bow roller
Stainless steel bow rail
Separate anchor locker with hatch
Large forward cabin hatch
2 fixed front windows

2 Sliding side windows
Fly bridge screen armour glass fronts
Cabin hand rails
Non skid decking
Navigation lights

OPTIONAL EQUIPMENT

Centre bunk cushion
Cabin lambswool lining
Cockpit carpet
Boarding platform

Hard top
Hard top extension
Larger engines up to 25HP

QUOTATIONS AVAILABLE ON ECONOMY VERSIONS
PRICES & SPECIFICATIONS SUBJECT TO CHANGE WITHOUT NOTICE