



Craftsmanship Since 1946



OWNER'S MANUAL
V:2026.01



The Nichols Group has been at the forefront of the Australian boating industry since Roy Nichols established the boat building company in 1946.

Congratulations on purchasing one of the finest pleasure boats in the world. Your new Cruise Craft has been meticulously crafted to the highest standards by skilled craftsman, using the finest quality materials. We hope you enjoy many years of boating pleasure with your new vessel.

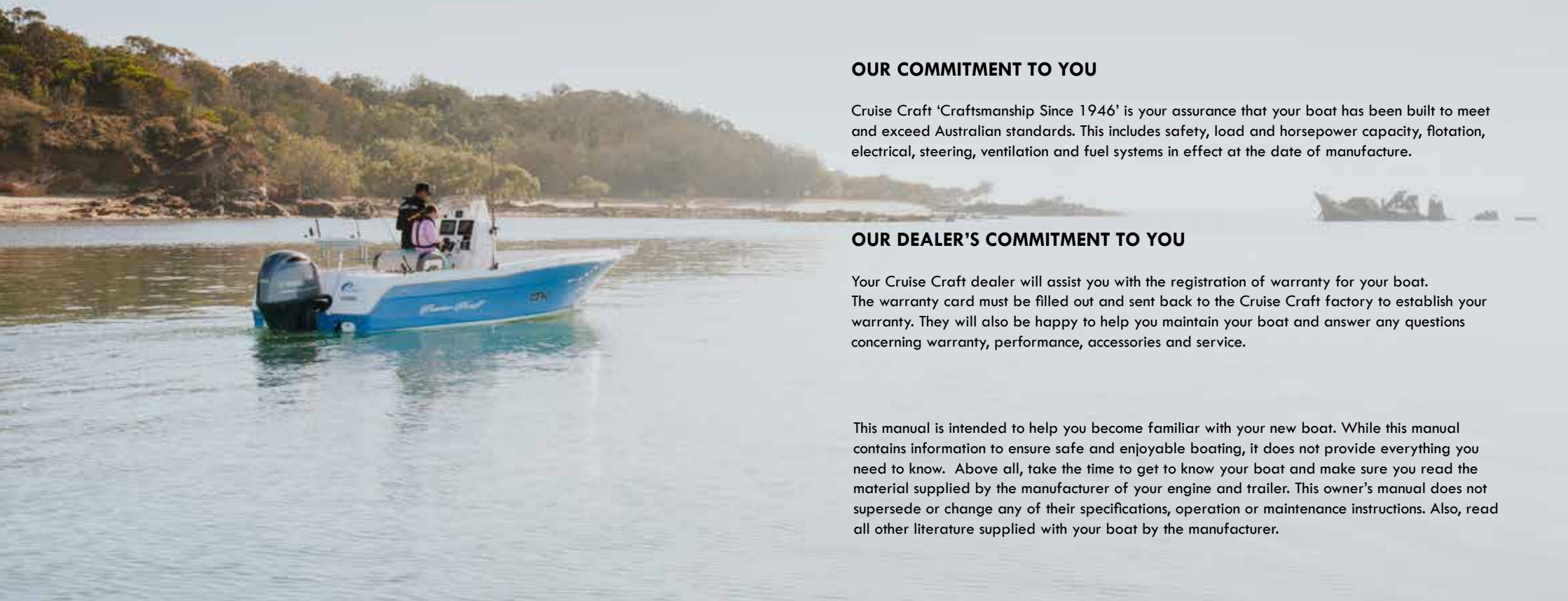
OUR COMMITMENT TO YOU

Cruise Craft 'Craftsmanship Since 1946' is your assurance that your boat has been built to meet and exceed Australian standards. This includes safety, load and horsepower capacity, flotation, electrical, steering, ventilation and fuel systems in effect at the date of manufacture.

OUR DEALER'S COMMITMENT TO YOU

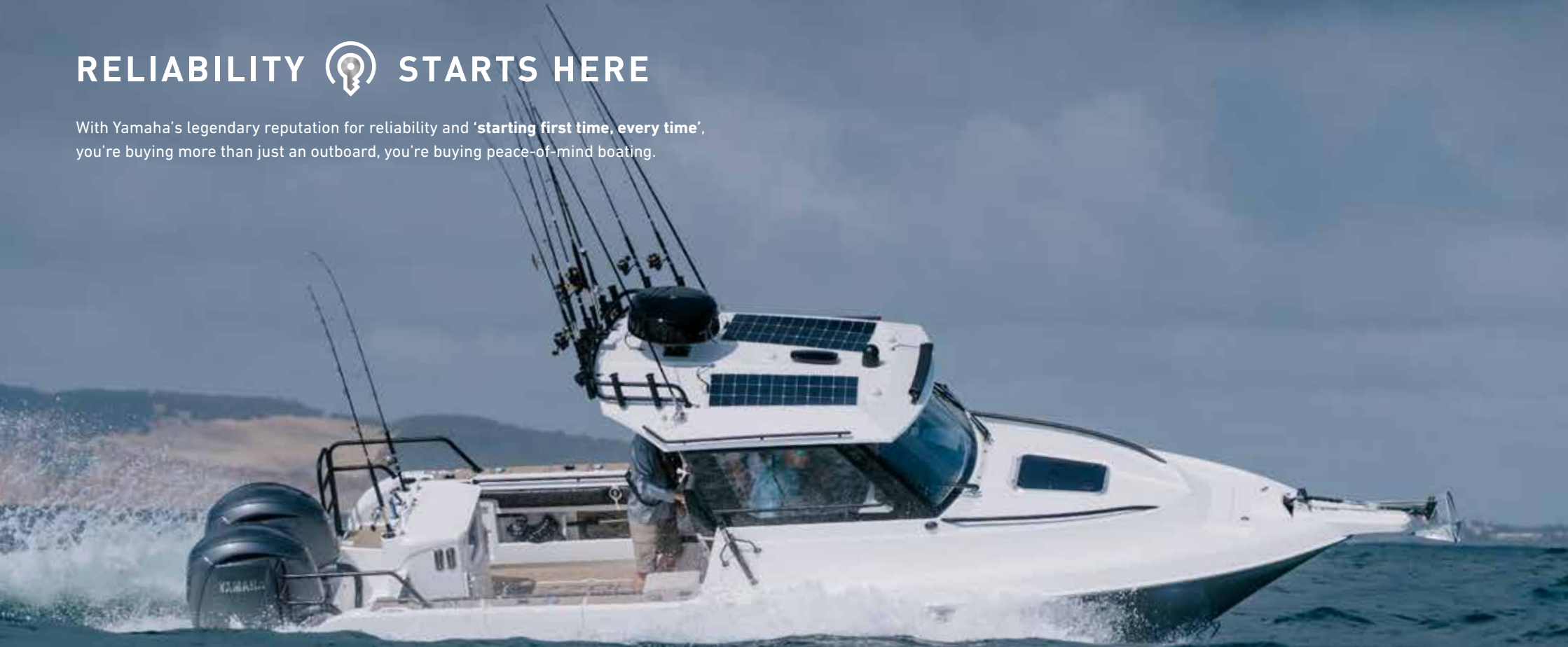
Your Cruise Craft dealer will assist you with the registration of warranty for your boat. The warranty card must be filled out and sent back to the Cruise Craft factory to establish your warranty. They will also be happy to help you maintain your boat and answer any questions concerning warranty, performance, accessories and service.

This manual is intended to help you become familiar with your new boat. While this manual contains information to ensure safe and enjoyable boating, it does not provide everything you need to know. Above all, take the time to get to know your boat and make sure you read the material supplied by the manufacturer of your engine and trailer. This owner's manual does not supersede or change any of their specifications, operation or maintenance instructions. Also, read all other literature supplied with your boat by the manufacturer.



RELIABILITY STARTS HERE

With Yamaha's legendary reputation for reliability and **'starting first time, every time'**, you're buying more than just an outboard, you're buying peace-of-mind boating.



POWERED BY  **YAMAHA**

This manual has been compiled to help you operate your boat with safety. It contains details of the boat equipment that is supplied or fitted its systems and information on its operation. Please read it carefully and familiarise yourself with the boat before using it.

Ensure that the anticipated wind and sea conditions will correspond to the design category of your boat and that you and your crew are able to handle the boat in these conditions.

This owner's manual is not a course on boating safety or seamanship. If this is your first boat or if you are changing to a type of boat you are not familiar with, for your own comfort and safety please ensure that you obtain handling and operating experience before "assuming command" of the boat. Your local Cruise Craft dealer will be pleased to advise you of competent instructors or local marine safety schools.

This owner's manual is not a detailed maintenance or trouble shooting guide. In case of difficulty, please contact your local Cruise Craft dealer.

Always use trained and competent people for maintenance, fixing or modifications. Modifications that may affect the safety characteristics of the boat shall be assessed, executed and documented by competent people. The Cruise Craft factory cannot be held responsible for modifications they have not approved.

NOTE: Any change in the disposition of the masses aboard (for example the addition of a fishing tower, radar, change of engine etc) may significantly affect the stability, trim and performance of your boat. Users of this boat are advised that:

- All crew should receive suitable training.
- The boat should not carry more than the manufacturer's recommended load.
- Bilge water should be kept to a minimum.
- Stability is reduced by any weight added high up.
- In rough weather, hatches, lockers and doorways should be closed to minimise the risk of flooding.
- Stability may be reduced when towing or lifting heavy weights using a davit or boom.
- Breaking waves are a serious stability hazard.

Always maintain your boat properly and make allowance for the deterioration that will occur in time and as a result of heavy use or misuse of the boat.

Any boat no matter how strong it may be, can be severely damaged if not used properly. This is not compatible with safe boating. Always adjust the speed and direction of your boat to suit the sea conditions.

The crew should be familiar with the use of all safety equipment (EPIRB, lifejackets, fire extinguisher etc) and emergency maneuvering (man overboard recovery, towing etc). Sailing schools and boat clubs regularly organise drill sessions.

PLEASE KEEP THIS MANUAL IN A SECURE PLACE AND HAND IT OVER TO THE NEW OWNER IF YOU SELL YOUR BOAT.

Disclaimer: As we are constantly updating and looking to improve how & what we incorporate into our boats, the owners manuals are constantly changing. You can always find the most recent edition on the Cruise Craft Website www.cruisecraft.com.au/downloads

GENERAL OPERATION	PAGE
- Switch Panel	1
- Fuse Panel	1
- Main Fuse / Curcuit Breaker	2
- Battery Management System	2
- Battery Positions	3
- Fuel System	3
- Navigation Lights	4
- Bulge Pump / Auto Float Switch	4
- Access Hatch	5
- Anchor Hatch	5
- Boarding Ladder	6
- Bimini - Aluminium Frame	6
- Stainless Steel Targa	7
- Sliding Extension	7
- Folding Rear Lounge	7
- Seat, Slide & Swivel	8
- Lockable Sliding Door	9
- Cockpit Drains - Transom	9
- Self Draining Scuppers - Transom	10
- Live Bait Tank	10
- Saltwater Deckwash	11
- Saltwater & Freshwater Deckwash COMBO	11
- Plumbed Killtank - Explorer 720	12
- 12 & 240 Volt Fridge / Freezer	13
- Anchor Winch	14
- Trim Tabs - Auto Retract	15
- Cockpit Table	16
- Tie Down Hooks	16
- Ski Pole	17
- Battery Charger	17
- Hardtops	18
- Yamaha Helm Master EX	18
- Electric Toilet	19
CHECKLIST	20
RECOMMENDATIONS	21
WATERSPORTS	22
BUILDERS PLATE	23-24
BOAT WARRANTY	25-26
SEADEK WARRANTY	27-29
MAINTENANCE	31
BOAT SERVICING	32-36
OWNERS RECORD	37
WARRANTY TRANSFER	38

SWITCH PANEL

Most switches for accessories, lights and electronics are located on the dash switch panel. Some models may have a live bait tank, deck wash and other accessory switches located on a separate switch panel near the transom door or above the Battery Management System.

(1) 6 Gang Switch Panel

Dash:

- Explorer 568 ST
- Explorer 635 ST/HT
- Explorer 720 ST/HT
- Outsider 635 ST/HT

Rear:

- Explorer 720 ST/HT

(2) 4 Gang Switch Panel

Dash:

- F360S x2
- F360M x2

Rear:

- F360S
- F360M

(3) 2 Gang Switch Panel

Rear:

- Explorer 568 ST
- Explorer 635 ST/HT
- Outsider 635 ST/HT

(4) 6 Gang Switch Panel

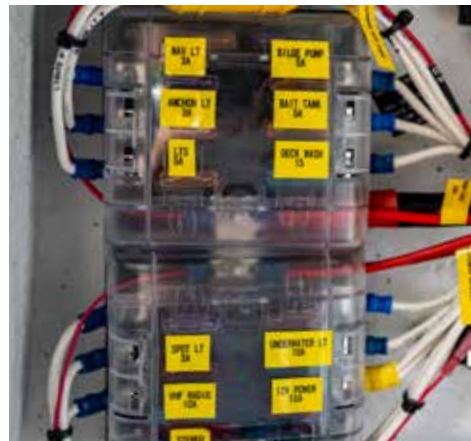
Dash & Rear

- E695HT
- E770HT



FUSE PANEL

The fuse panel is located behind the helm accompanied by all other wiring and switch panel connections. All fuses are clearly labelled for quick identification.



MAIN FUSE / CIRCUITBREAKER

All models are fitted with either a main fuse or circuit breaker depending on the model. This is located on the starboard rear bulkhead.



Boat Circuitbreaker

Anchor Winch Circuitbreaker

BATTERY MANAGEMENT SYSTEM

The battery management system allows you to switch between House, House & Start and Parallel. The switch is a 'make contact before breaking contact' switch, meaning you can move the switch even with electronics on or engine running. All Cruise Craft boats have dual charging to the house battery either via VSR or from the Yamaha Outboard.

On 1 (White) - Your house battery or battery bank on only (2 x batteries connected in parallel). This position allows for fridge/freezers, lights, stereo etc to be running without the engine power being connected.

On 1 & 2 (Green) - This is the normal operating position for your vessel. It allows for the house batteries to connect and the engine battery to connect but both are independent from each other.

On Parallel (Yellow) - Should only be used if the engine will not start as it joins all batteries in parallel. Once the engine is running switch back to the Green position.

Fitted to ALL models as Standard



Off - When boat not in use/in between trips.

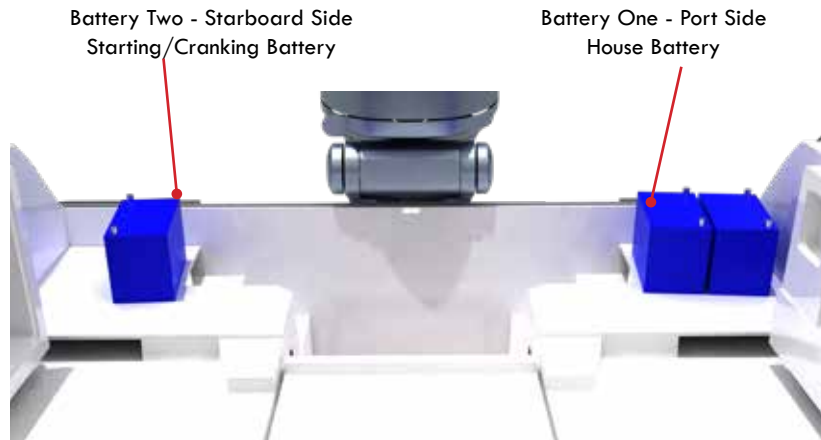
On (White) - House battery on only.

On (Green) - House and Start battery (use this position for normal use).

Parallel - Joining both/all batteries in parallel. For cranking if the start battery is low and max amps are required. Always move back to the Green position once the engine is started.

BATTERY POSITIONS

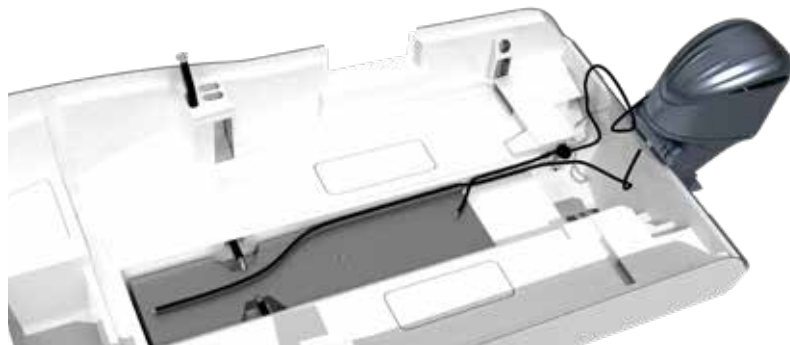
There is a designated mounting pad (battery shelf) on both sides of all vessels allowing the batteries to be fastened into position without piercing the floor. This also ensures the batteries are above the water which flow into the bilge when hosing off the deck etc. With a standard dual battery setup the house battery (1) will be mounted on the port side. The cranking/starting battery (2) will be mounted on the starboard side. If the second house battery option is selected (triple battery management system) it will sit next to the house battery on the port side.



NOTE: The above layout can change if additional options are added (e.g water tank).

FUEL SYSTEM

The fuel cap is situated midship on the portside except on the Fish 360 range which has dual fillers with a filler midship on both sides. The fuel cap is clearly marked 'FUEL'. To open, turn the cap counter clockwise and to close turn clockwise.



Note: Check fuel filter regularly for signs of water, which can be seen by separation. Use the tap at bottom of filter to drain away the water. The filter should then be replaced at earliest convenience.

NAVIGATION LIGHTS

All models have one red light (port), one green light (starboard) and one all round white light. The switches for these lights are located on the dash switch panel. The 'Navigation Light' switch operates the red and green lights and also the illuminates the compass, if fitted. The 'Anchor Light' switch operates the all round white light.

Although activities are limited at night, night cruising can be pleasurable. Be especially careful of shallow waters and be on the watch for submerged debris, rocks and other obstacles in the water. Your navigation lights are intended for collision avoidance only and are not intended to improve the operators' night vision.

Note: Check lights for proper operation before heading out. You should also learn to identify the running light combinations for other vessels. We recommend your participation in a boating safety course to further learn about navigation lights and safe boating practices.



BILGE PUMP

The bilge pump is located in the rear of the bilge on all models. To activate the bilge pump, turn the 'Bilge Pump' switch ON which is located on the dash switch panel. When operating the bilge pump always keep an eye on the outlet, when the water flow stops turn the bilge pump switch OFF. Do not run the bilge pump dry for any extended period of time as damage to the pump and/or wiring may occur.

All bilge pumps are fully automatic with a built in sensor to turn on the pump when the water level becomes too high. Bilge pumps are also wired directly to the start battery with a 24 hour fuse located on the Main Battery Switch panel so they are always active, even if the battery switch is in the off position.



ACCESS HATCH

Access hatches are found on all models, excluding the F360 Series. They are located at the front of the cabin for easy access to the forward deck and anchoring operations.

Note: All hatches and walkthrough windscreens should be in the closed and locked position while travelling.



ANCHOR HATCH

Anchor hatches are found on all models. They are located on the bow of the boat for convenient storage of anchor, rope and chain. All hatches should be locked down while travelling.



BOARDING LADDER

A boarding ladder is mounted on the rear port side of the transom. Ensure your ladder is in the up-right or stowed position while travelling.



BIMINI - ALUMINIUM FRAME

The optional bimini with aluminium frame is designed for weather protection and comfort against the wind, sun and rain. It does not have to be retracted or stowed away when travelling on the road.



STAINLESS STEEL TARGA

The optional bimini with aluminium frame is designed for weather protection and comfort against the wind, sun and rain. It does not have to be retracted or stowed away when travelling on the road.



SLIDING EXTENSION

Targa's and hardtops have an optional sliding extension for extra weather protection. To use the sliding extension loosen the locking t-bolts, slide the extension out into desired position and then tighten the locking t-bolts.



FOLDING REAR LOUNGE

Some models may have a folding rear lounge either as standard or optional. To put the rear lounge in the seating position, pull the front of the lounge up and outward and make sure the rear of the lounge is firm in position. Pull down the support legs at the front of the lounge for further support. The rear lounge can be fully removed to gain access to the rear bilge. Ask your dealer for a full demonstration.



SEAT, SLIDE & SWIVEL

Seat slides and swivels are fitted to most Cruise Craft models to ensure driver and passenger comfort. To adjust the seat position, a lever has been positioned on the starboard side under the seat. Pull the lever up to slide back or forward then release to lock into the desired position. There is also a lever on the port side for swiveling.



Slide lever

Swivel lever



LOCKABLE SLIDING CABIN DOOR

The sliding cabin door if fitted runs along two tracks, one at the top and the other at the bottom of the door. When the door is open it should be locked into position using the barrel bolt at the bottom of the dash panel. This will stop the door from accidentally slamming closed and causing damage to the door and any occupants. The door comes with a lockable catch for security.

Note: The key should not be left in the lock as there is a risk of breaking it off when the door slides open. For safety reasons, the door should not be locked with the key while anyone is inside the cabin.

Always ensure the door is locked into either the open or closed position when the boat is underway.



COCKPIT DRAINS - TRANSOM

Cruise Craft 635 and 720 range have cockpit drains fitted to the port and starboard transom for easy water drainage when hosing or cleaning out the cockpit area.

Note: Ensure cockpit drains are in the closed position before launching your boat.

Maintenance: Inspect the o-ring every 6 months for wear/deterioration and replace if required.



SELF DRAINING SCUPPERS - TRANSOM

Cruise Craft F360 range have Self Draining Scuppers fitted to the port and starboard transom for easy water drainage.

Note: Not intended for permanent immersion and will not stop 100% of water from entering the boat.

Maintenance: Inspect the Scuppers every 6 months for wear/deterioration and replace if required.



LIVE BAIT TANK

The live bait tank is run by a pump installed in the bilge. To operate ensure the ball valve in the bilge is open and the aerator inside the live bait tank is open. Turn the 'Bait Tank' switch on which is located on the rear switch panel.

Note: If the aerator in the live bait tank is left open when the boat is underway, it may slowly fill from the water pressure pushing through the system. Therefore, when the live bait tank is not in use please ensure that the aerator is closed by turning clockwise.



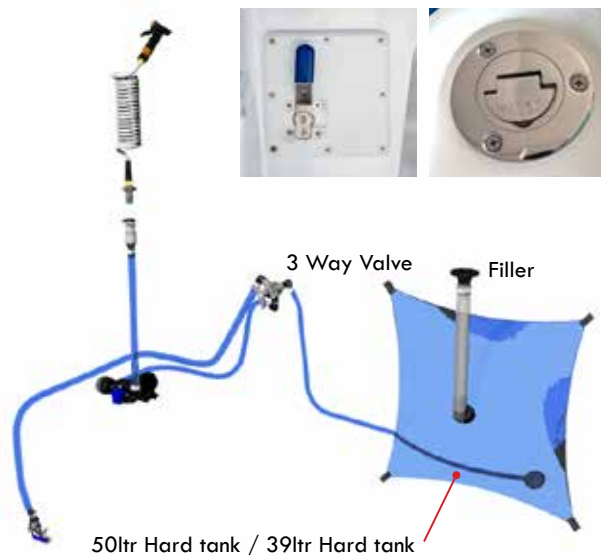
SALTWATER DECKWASH

The saltwater deckwash outlet is situated on the port side rear transom. To operate the deck wash, plug the hose fitting into the deck wash outlet, ensure the ball valve in the bilge is open and turn the 'Deck Wash' switch ON which is located on the rear switch panel.



SALTWATER & FRESHWATER DECKWASH

If you have a freshwater water tank fitted to your boat for a freshwater deckwash you can operate it using the same pump as your deckwash. Plug the hose into the deck wash outlet and turn the 'Deck Wash' switch ON which is located on the rear switch panel. On the three way valve mounted on the rear port side of the cockpit turn the handle until the arrow is pointing to 'F' for freshwater or to 'S' for saltwater. The freshwater filler is located in the rear portside deck.



PLUMBED KILL TANKS - EXPLORER 720 ST/HT

The plumbed kill tanks in the Explorer 720 has a single pump for filling and a pump per kill tank for draining. The bungs in each kill tank must ALWAYS be in even if the kill tanks will not be used. To fill the kill tanks ensure that the ball valve in the bilge is open and the aerator inside each tank is open and then press the 'SW Pump' switch. If you only want to fill one tank, simply close the aerator in the tank you don't want to fill by turning clockwise.

Once the kill tanks are full make sure you turn off the 'SW Pump' switch otherwise they will overflow onto the floor and then into the bilge. To drain the kill tanks simply press the 'Up - Port - Dn' switch for the port kill tank or 'Up - Starboard - Dn' switch for the starboard kill tank.

Note: If the aerators in each tank are left open when the boat is underway, the tanks may slowly fill from the water pressure pushing through the system. Therefore, ensure aerators are closed when kill tanks are not in use.

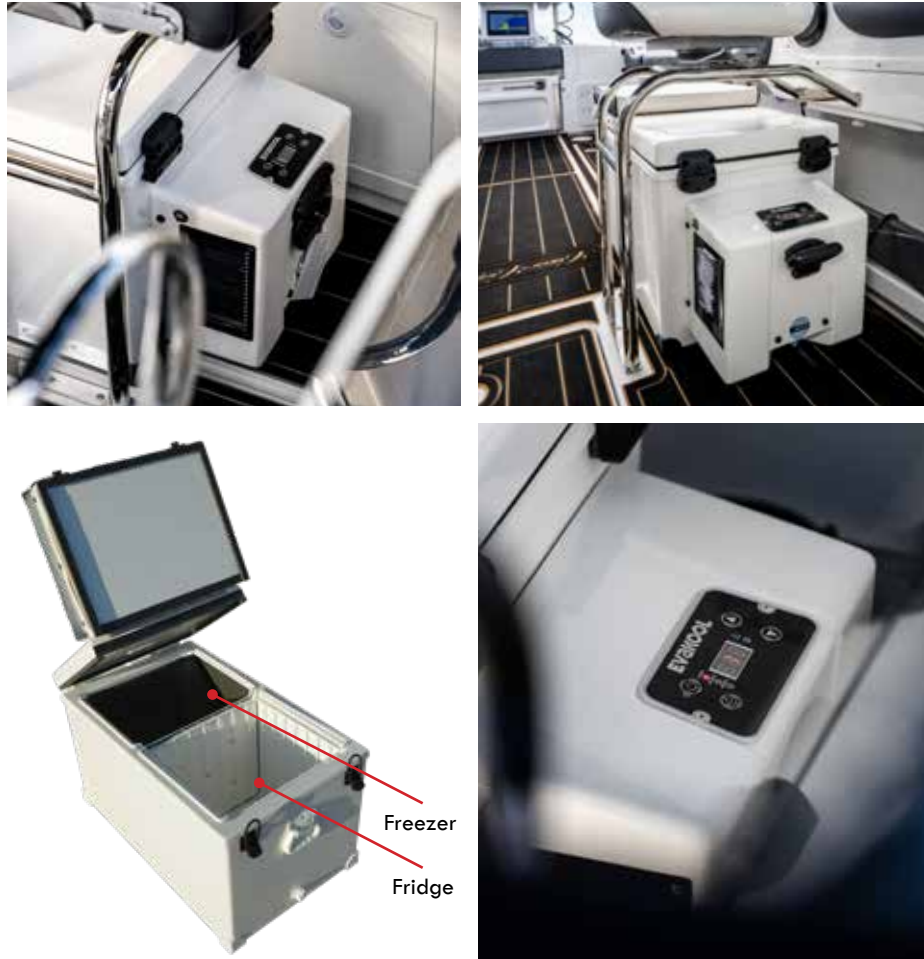
Do not drain the kill tanks through the drain bungs in the kill tanks unless the boat is out of the water. Be sure to drain kill tanks when towing or at home.



12 & 240 VOLT FRIDGE/FREEZER

The optional 12 volt fridge/freezer when factory fitted comes with a 12 volt outlet or anderson plug fitted in the port side pocket. It is also supplied with a power lead for connection to 240 volt power. It is important to monitor battery usage when using the fridge/freezer to ensure batteries are not run too low. When the fridge/freezer option is selected it is recommended to upgrade to a three (3) battery management system.

PLEASE NOTE: The Anderson plug's fitted for 12 volt fridge/freezer's are not suitable for Electric reels as they require larger cable and circuit breakers.



****The Circuit Breaker for a 12 volt fridge/freezer is located on and labelled on the main battery switch panel.**

ELECTRIC WINDLASS / STRESSFREE DRUM ANCHOR WINCH

If your boat is fitted with a winch, be sure to:

- Keep limbs, fingers, clothing and hair clear of winch and anchor rope/chain during operation.
- Ensure there are no swimmers or divers nearby when dropping anchor.
- An Electric Windlass Winch must not be used as the sole means of securing the anchor to the bow fitting.
- On an Electric Windlass Winch, anchors should be independently secured to prevent accidental release.
- Classification societies require that a vessel lying at anchor must have its anchor rope chain secured to a suitable independent strong point.
- Any independent strong point must be strong enough to hold the anchor and rope/chain under storm conditions.

Your winch is operated from the helm position via an up/down toggle switch. In case of an overload there is also a labelled Breaker/Isolator switch which is mounted near the battery isolator switch at the back of the boat. You are able to test the switch by pushing the red button on the breaker. A reset switch should pop down. If it does not, contact your dealer straight away. To reset the switch, just push it back into place.

Please refer to your Winch Owner's Manual supplied with your boat for full operating instructions.

Electric Windlass Anchor Winch



Anchor must be locked into bollard using pin when anchor stowed and when anchoring.

StressFree Drum Anchor Winch



Anchor Rope must be locked around the Pop-Up Cleat when anchoring.

TRIM TABS - AUTO RETRACT

Trim tabs if fitted are located at the stern of the vessel and are used to adjust the boat's trim to the optimum angle depending on load, wind and water conditions. The trim tabs are controlled by two (2) switches located on the dash.

During your first few boating trips, experiment with the trim tabs once the boat is on the plane. Set the tabs in various positions and note how the boat reacts. This will give you a feel on how the trim tabs work. Press the trim tab switch for only and second or two at a time and then wait for the boat to react. If the boat is still listing after a minute, press again for another second or two.

The factory fit Lenco Auto Retract Trim tabs will automatically go all the way up to the neutral position when the ignition is turned off.

Please refer to the Lenco, Seakeeper Ride or Zip Wake Owner's Manual supplied with your boat for full operating instructions.

Important: Trim tabs are only to be used to correct port and starboard leaning, so only use one tab at a time. They are not to be used simultaneously to push the bow of the boat down.



TIE DOWN HOOKS

All models are fitted with tie down hooks which are located on the port and starboard sides of the transom. These may also be used for watersports and attaching ski ropes and up to a single 2 person ski tube.



****Boat Buckles are a permanent fixture on all current Easytow trailers.**

STAINLESS STEEL SKI POLE

Most models may be fitted with an optional ski pole. It is positioned in the centre of the rear deck, mounted through a stainless steel plate on the deck then down to a stainless plate mounted on the floor. This is where the fastening bolt is located to hold the ski pole in place. To remove the ski pole, loosen the locking nut on the bottom mount then slide the pole up until it is clear of the deck. To replace the ski pole, slide the pole down through the top plate and into the bottom mount. Be sure to have the locking nut clear so the pole can be fully inserted, then tighten the locking nut.

Note: The ski pole is not to be used for towing, large ski tubes.



BATTERY CHARGER

When using the optional battery charger the battery isolator switch must be in the off position. Please refer to the Battery Charger Owner's Manual supplied with your boat for full operating instructions.

Note: Whenever charging batteries it is important to have good ventilation (open vents & hatches)



HARDTOPS

The hardtop is designed for maximum weather protection and comfort against the sun and rain, with rod holder racks for storing your rods while travelling from one fishing destination to another. The windscreen incorporates a sliding window on each side as well as a windscreen wiper. It is important to clean sliding window tracks regularly.

Note: Do not stand on the hardtop or use it as a storage area.



GENERAL OPERATION

ELECTRIC TOILET

When underway make sure both ball valves for the toilet are **CLOSED**. Failure to do so may cause overflowing of the toilet caused by pressure.

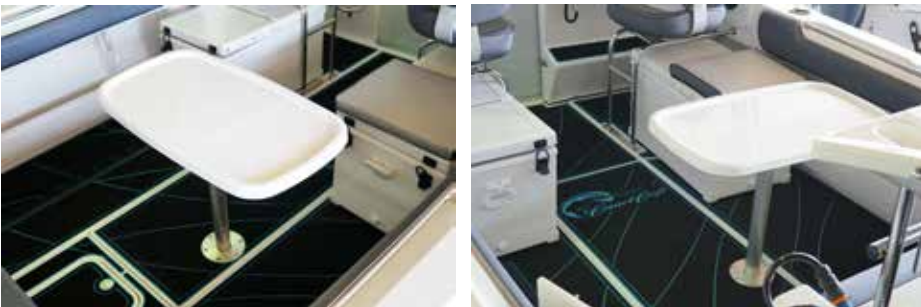
Maintenance: Once finished with the toilet, close the inlet valve and flush out all remaining saltwater in the toilet and motor. Fill the toilet bowl with freshwater and flush it through the system then close the outlet valve. This will maximise the lifetime of your Electric Toilet.



COCKPIT TABLE

The cockpit table if fitted is removable. To remove the table, you must press the black button on the socket under the table and lift the table upwards. Repeat this procedure to remove the table leg.

Note: You might need to give the table or post a gentle twist to break the seal.



YAMAHA OUTBOARDS

Regular servicing and correct maintenance are vital in ensuring you will be enjoying your Yamaha for many years to come. Correct service and maintenance helps keep you safe and increases overall reliability. Yamaha's technicians have received world-recognised training that focuses exclusively on our product range.

For all your information regarding Yamaha Outboards please head to:

<https://www.yamaha-motor.com.au/products/marine/outboard>



YAMAHA HELM MASTER EX

Be sure to check the circuit breaker is in the **ON** position for the electric steering before launching the boat. The fuse will be labelled on the Main Battery Switch panel (For all models excluding Explorer 720's).

For all your information regarding Helm Master EX please head to:

<https://www.yamaha-motor.com.au/discover/outboard-tech/helm-master-ex>



Boating safety and the safety of your passengers is your responsibility. You should fully understand and become familiar with the following safety precautions before launching your Cruise Craft boat.

1. Never operate a boat while under the influence of drugs or alcohol. Doing so is a serious offence. Make sure only qualified drivers operate your boat.
2. Your boat and equipment should be kept in safe operating condition. Regularly inspect the hull, engine, trailer, safety equipment and all other boating gear.
3. Use extreme CAUTION while fuelling your boat. Become familiar with the capacity of your boat's fuel tank and fuel consumption for commonly used RPMs. Avoid fuelling up at night except under well-lit conditions. Fuel spills are hard to see at night.
4. Keep enough fuel on board for your planned cruising requirements as well as for changes in your plans due to adverse weather or other situations. We recommend the 1/3 rule: use 1/3 of your fuel to reach your destination, use 1/3 to return and keep 1/3 in reserve.
5. All regulation safety and fire extinguishing equipment on board must be eye-catching, unrestricted and in safe operating condition. All passengers should become familiar with the operation and location of all equipment.
6. Keep an eye out on the weather. Be aware of possible changing conditions by monitoring local weather broadcast prior to departure. Strong winds and electrical storms should be closely monitored.
7. Accurate and up to date charts of your boating area should always be on board.
8. Before departure, file your cruise log with a responsible person ashore and be sure to log on and off with your local Coast Guard.
9. Always operate your boat with consideration, courtesy and common sense.
10. At least one other passenger aboard should be familiar with the basic operating procedures for handling your boat, in the event you unexpectedly become unable to do so.
11. Never allow passengers to ride on areas of your boat other than designated seating areas.
12. All passengers should remain seated when possible while the boat is moving.
13. Never use the boarding platform or ladder while the engine is running. Be aware of the location of the motor leg or propellers and turn Engine OFF before entering the water from the swim platform ladder.
14. Study and obey the Rules of the water. Always maintain complete control of your boat.

Note: The presence of the boat's maximum weight capacity plate does not override your responsibility to use common sense or rational judgment. The capacity of your boat is reduced by turbulent water and other adverse weather conditions. You should have prior knowledge of existing water and weather conditions before getting underway.

Drugs and Alcohol

In the best interest of safety, you SHOULD refrain from the use of Drugs and/or Alcohol while operating your boat. Operation of motorised vessels while under the influence is a Federal/State offence carrying a significant penalty. The use of Drugs and/or Alcohol will decrease reaction time, impede judgement, impair vision and inhibit your ability to safely operate a boat.

Waterskiing, wakeboarding and riding a towed inflatable apparatus are some of the more popular watersports. Taking part in watersports requires increased safety awareness by the participants and boat operator. Safety awareness is of primary importance in preventing accidents and injury.

Do not allow anyone near the propeller(s), even when the engine is off. Propeller blades can be sharp and can continue to turn even after the engine is off.

Everyone participating in a water sport should observe these guidelines:

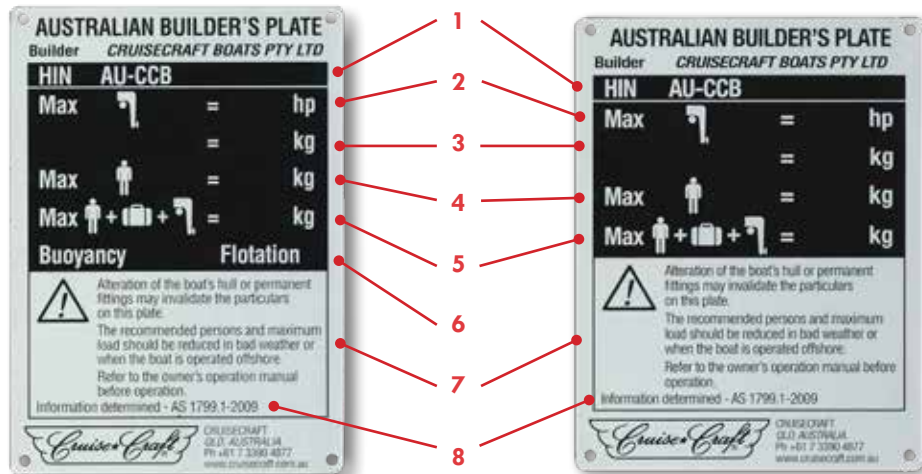
1. Allow only capable swimmers to take part in any watersport.
2. Always wear a personal flotation device (PFD) approved by the Countries legislation. Wearing a properly designed PFD will help a stunned or unconscious person stay afloat.
3. Always participate in watersports in safe areas. Stay away from boats, beaches, swimmers and heavily travelled waterways. Be considerate of others you share the water with.
4. Have a second person aboard to observe what is going on behind the boat and keep the driver informed. The driver must give full attention to operating the boat and the waters ahead.
5. Give immediate attention to a person who has fallen. He or she is vulnerable in the water alone and may not be seen by other boaters. Be careful not to swamp the boat while taking a skier aboard.
6. Approach a person in the water from the lee side (opposite the direction of the wind). Stop the boat's motor before coming close to the person.
7. Do not waterski between sunset and sunrise. It is illegal in most states.
8. Always attach the waterski rope to the ski pole or rear U-bolts fitted. Do not use the ski pole to tow your boat or other boats.

All Cruise Craft models are fitted with an Australian Builders Plate and fall into three (3) different categories:

- Under 6 Metres
- 6 Metres and Over
- CE Certified

BOATS UNDER 6 METRES

BOATS 6 METRES AND OVER



1. Hull Identification Number
2. Maximum Hp Outboard engine allowed to be fitted to the vessel.
3. Maximum Weight of the Outboard engine allowed to be fitted to the vessel.
4. Maximum Number & Weight of People that the boat is designed for.
Note: Worked out at 80kgs per person.
5. Total maximum load the boat is designed to carry, including all people, luggage and outboard engine.
6. Buoyancy and Flotation level of the vessel.
7. Important Warning Statement
8. Standard by which the information has been determined.

Before going out for a day of fun and relaxation, make sure you have:

- ✓ Checked the air in the trailer tyres.
- ✓ Checked the lights on the trailer to make sure they are working correctly.
- ✓ Checked the boat is securely fastened to trailer before towing.
- ✓ Checked the latch and release needs to be open when travelling to avoid rubbing
- ✓ Checked the fuel/oil levels and topped up if required.
- ✓ Checked the batteries.
- ✓ Checked current weather conditions and the forecast.
- ✓ Checked all supplies for your trip and that all safety equipment is in date.
- ✓ Checked that all drain bungs are in, including the bungs in all kill tanks and storage boxes (where applicable)



What is the warranty period?

The warranty commences on the **original** date of purchase for a period of:

- **Seven (7)** years for structural defects in the hull and deck.
- **Two (2)** years for defects in the steering components listed in this warranty.
- **One (1)** year gelcoat finish: protection from crazing, stress cracks and voids.
- **One (1)** year for defects in all other components listed in this warranty, unless specified by the equipment supplier.

What is covered?

Cruise Craft warrants to the original owner of a Cruise Craft boat that the following components of its boat will be free from defects in material and workmanship, subject to the terms below, during the warranty period:

- The hull and deck including liners, stringers, transom, all deck and hull joints;
- The following non-structural components included with the boat at factory:
 - a. steering: helm, hoses, cables, hydraulic cylinders.
 - b. electrical: switches, wiring harness, lights (all types), all 12v equipment.
- Fuel system: tank, hoses, fuel gauge sender, filler and vent.
- Upholstery, carpets and canvas: stitching and workmanship.
- Factory fitted accessories or standard equipment: ladders, windshield, rod holders, tackle boxes, anchor bollards, cleats, bow rails, targa, hand rails, live well plumbing, freshwater and saltwater pumps, bilge pump and float switch, and steering wheel.
- Gelcoat surfaces, including but not limited to, gelcoat cracks, star-crazing or cracks, air voids, fading, chalking, hazing or water blistering. (We recommend any boat that is to be left in the water have anti-fouling paint or similar protectant applied to the bottom).

What is the owner required to do & when?

For this warranty to be effective, the owner must:

- Send the warranty registration card to Cruise Craft within thirty (30) days of purchase.
- Notify Cruise Craft, or its authorised representative in writing of any defect within seven (7) days of discovery.
- Deliver the boat to Cruise Craft, or its authorised representative, as directed by Cruise Craft during the warranty period; and,
- Be responsible for all costs relating to:
 - a. boat packing, freighting and storage costs.
 - b. tear down and repair costs if it is established that the part or parts thought to be defective are not covered by this warranty.

What is Cruise Craft required to do?

Cruise Craft will repair or, at their discretion, replace any part they determine to be defective due to faulty workmanship or material.

What is excluded from the warranty?

This warranty will not apply when the boat has been subject to:

- Abuse, alteration, modifications, accidents, collisions, improper trailering, submersion, unreasonable use, tampering, vandalism or neglect;
- Improper operation, maintenance and storage;

What is excluded from the warranty? Continued..

- Use other than in accordance with the boat capacity plate and other maintenance direction from Cruise Craft;
- Racing or competition; or
- Commercial use.

In addition, this warranty does not cover:

- Damage to chrome plated, stainless steel and anodized finishes;
- 'tea stains' on stainless steel fittings;
- Deterioration caused by exposure to the elements or the use of cleaners/chemicals.

Is this warranty transferrable?

Yes, provided we received written notice from the new owner of the boat within thirty (30) days of purchase confirming the purchase and specifying their: full name; address and date of purchase.

General

This document contains the entire warranty given by Cruise Craft and there are no other terms, promises, conditions or warranty other than those contained in it. No oral or written information or advice given by the Company, its dealers, representative, agents or employees shall create a warranty by the Company or in any way increase the scope of this warranty.

Subject to any implied warranty at law, Cruise Craft shall not be liable for any consequential losses including loss of time, use and enjoyment or inconvenience.

All parts replaced under the terms of the warranty remain the property of the Cruise Craft.

Should we elect to replace any part, whatever is replaced shall be subject to the remaining duration and conditions of this warranty and not subject to an extended or new warranty.

Our goods come with guarantees that cannot be excluded under the Australian Consumer Law. You are entitled to a replacement or refund for a major failure and compensation for any other reasonably foreseeable loss or damage. You are also entitled to have the goods repaired or replaced if the goods fail to be of acceptable quality and the failure does not amount to a major failure.

Goods presented for repair may be replaced by refurbished goods of the same type rather than being repaired. Refurbished parts may be used to repair the components.

This warranty is given by Cruise Craft Boats Pty Ltd. Contact details:

Address: 58 Anton Road, Hemmant, Qld, 4174

Phone: +61 7 3390 4877

TRANSFERABLE WARRANTY

You can transfer the balance of the remaining warranty into your name but the Cruise Craft factory **MUST** BE notified within 30 days from your date of purchase. Please email Boat HIN, Motor Serial no. & Trailer VIN + your FULL name, Address & Mobile to info@cruisecraft.com.au

**HYPERFORM, INC. END USER/DEALER/DISTRIBUTOR/CERT FABRICATORS
LIMITED WARRANTY FOR SEADEK PRODUCTS**

Thank you for your purchase of a Hyperform, Inc. product. This Limited Warranty (the "Warranty") is made by HYPERFORM INC. ("Hyperform"), a Florida corporation, in connection with the Buyer's purchase of a Hyperform product, as more fully defined in that certain purchase order of even date herewith ("the Covered Product"). This Warranty constitutes the entire agreement between Hyperform and the Buyer as to any warranty provided by Hyperform to the Buyer on the Covered Product.

I. ACKNOWLEDGEMENTS OF BUYER. By purchasing a Hyperform product, Buyer accepts this Warranty and acknowledges the following:

A. That Buyer has read and understands and agrees to the terms and limitations of this Warranty.

B. That Buyer has been provided with sufficient opportunity to consult with independent legal counsel regarding this Warranty and the limitations hereof, and that Buyer has not relied upon any statements or representations of Hyperform for Buyer's understanding or interpretation of any provision hereof.

WHAT THIS LIMITED WARRANTY COVERS. Hyperform warrants to the Buyer ("Buyer", for purposes of this Warranty, means only first purchaser of the Covered Product and does not extend to subsequent purchasers) that the Covered Products are free from defects in workmanship and materials at the time of manufacture and for a period of thirty-six (36) months from the date the Covered Products are shipped from Hyperform for delivery to the Buyer. The limited warranty provided hereunder is subject to the strict precondition provided that the Covered Products are used and maintained in accordance with all Hyperform specifications for preparation, installation, storage, as set forth in the two documents, Storing SeaDek Instructions (TAB 4-21) and Applying SeaDek Instructions (TAB 4-20), relevant to the Covered Product, which may be found posted at seadek.com. Improper installation and/or repair voids this Warranty in its entirety, without exception.

II. WHAT THIS LIMITED WARRANTY DOES NOT COVER. This limited warranty does not cover the installation of the Product onto any surface, nor does it cover adhesion of the Product to the boat or to any other surface to which the Covered Products are applied. This warranty applies only to material and workmanship of the Covered Product itself. Some fading and/or discoloration of the Covered Products may occur with time and use in the marine environment; such fading and/or discoloration is not covered by this limited warranty. This limited warranty covers only excessive fading or polymer degradation resulting from defective materials. This warranty specifically EXCLUDES deformation, discoloration or other damage to the Covered Product, and EXCLUDES all other damage or loss, resulting from the Covered Product's being subjected to temperatures in excess of 165°F ("Max Temp"). See Light Amplification (TAB 4-26). Max Temp may occur for example in certain specific installations which result in light amplification at the Covered Product surface due to reflection of sunlight from reflective surfaces or refraction of sunlight through light-transmissive surfaces such as windshields or optically clear structures. Care should be taken to avoid installing the Covered Product in such areas. It is exclusively the Buyer's responsibility to provide assurance that any particular installation will not exceed the Max Temp. Hyperform, Inc. shall not be responsible for any damage or loss resulting from any application or use of the Covered Product which exceeds the Max Temp. Installations resulting in the Covered Product's experiencing temperatures in excess of the Max Temp shall void this Warranty in its entirety.

III. WHAT HYPERFORM WILL DO.

Covered Products determined by Hyperform to have material and/or workmanship defects will be covered as follows. Products deemed by Hyperform to be defective within thirty-six (36) months of shipment to Buyer will be replaced or a refund for the defective product will be provided. At Hyperform's sole option, they may choose to cover the shipping charges of the replacement pad for shipping within the U.S. The Buyer will be responsible for all shipping charges for international shipping.

PROCEDURE. The Buyer shall first submit a completed End User/Dealer/Distributor/Cert Fabricator Warranty Replacement Request and supporting photographs depicting the defective condition and/or return the product. The instructions for this process can be found within the Return Material Authorization (RMA) document (Form 4-13). If deemed defective by Hyperform an RMA (Returned Merchandise Authorization) will be issued along with a credit or a replacement pad for the defective Product in accordance with the terms stated here in.

IV. LIMITATIONS ON HYPERFORM LIABILITY AND MISCELLANEOUS PROVISIONS.

- A. Hyperform's total liability under this Warranty shall not exceed the replacement value of the Covered Product.
- B. In no event will Hyperform be liable under any theory of liability or be obligated for consequential or indirect damages of any type or nature.
- C. This Warranty shall not be assigned or transferred by the Buyer without the prior written approval of Hyperform.
- D. This Warranty shall be governed by and construed according to the laws of the state of Florida, U.S.A. The Parties agree to personal jurisdiction in the state of Florida, and venue in Brevard County, Florida, or in the Federal Court for the Middle District of Florida, Orlando Division.

V. WARRANTY DISCLAIMERS.

- A. THIS WARRANTY SUPERSEDES AND REPLACES ANY PREVIOUS WARRANTY MADE OR OFFERED TO THE BUYER BY HYPERFORM AND SEADEK, INCLUDING BUT NOT LIMITED TO ANY WARRANTY SET FORTH IN ANY OTHER AGREEMENT BETWEEN THE PARTIES HERETO.
- B. HYPERFORM SPECIFICALLY DISCLAIMS ALL WARRANTIES OF ANY KIND, EXPRESS OR IMPLIED, NOT SPECIFICALLY SET FORTH IN THIS WARRANTY. OTHER THAN AS SPECIFICALLY SET FORTH IN THIS WARRANTY; (1) THERE ARE NO WARRANTIES ESTABLISHED OR IMPLIED; (2) THERE ARE NO WARRANTIES WHICH EXTEND BEYOND THE DESCRIPTION ON THE FACE HEREOF; (3) NO EXPRESS WARRANTY IS GIVEN; AND (4) NO AFFIRMATION OF FACT OR PROMISE MAKE BY HYPERFORM, BY WORD OR ACTION, SHALL CONSTITUTE A WARRANTY.
- C. ALL IMPLIED WARRANTIES OF MERCHANTABILITY AND/OR FITNESS OR SUITABILITY FOR A PARTICULAR PURPOSE ARE EXPRESSLY EXCLUDED FROM THIS WARRANTY.
- D. EXCEPT FOR THE PROVISIONS SET FORTH IN THIS WARRANTY, NO AGENT, EMPLOYEE, SUBCONTRACTOR, OR REPRESENTATIVE OF HYPERFORM HAS ANY AUTHORITY TO BIND HYPERFORM TO ANY OTHER AFFIRMATION, REPRESENTATION, OR WARRANTY CONCERNING THE PRODUCT SOLD TO THE BUYER. UNLESS AN AFFIRMATION, REPRESENTATION OR WARRANTY IS SPECIFICALLY INCLUDED IN THIS WARRANTY, IT SHALL NOT BE ENFORCEABLE BY THE BUYER.
- E. HYPERFORM MAY, FROM TIME TO TIME, IN THEIR SOLE DISCRETION OFFER TO REPAIR OR REPLACE COVERED PRODUCT IN CERTAIN SPECIFIC SITUATIONS. SUCH OFFERS BY HYPERFORM, INC, IF MADE, ARE NOT TO BE CONSTRUED AS A WAIVER OF ANY EXCLUSION OR OTHER LIMITATION TO THIS WARRANTY STATED HEREIN, NOR ARE THEY TO BE TO BE CONSTRUED AS A COURSE OF DEALING THAT IN ANY WAY MODIFIES THE TERMS OF THIS WARRANTY.



SEADEK - LIGHT AMPLIFICATION

What is Light Amplification?

Light Amplification, also known as Sunburning is an environmentally induced occurrence where sun reflection can cause burning of SeaDek pads.

For certain applications and under certain conditions, SeaDek applied in areas with vertical surfaces and/or reflecting off hardware, gelcoat, stainless steel, etc., can expose SeaDek to temperatures above the operation temperature of 165°F (73°C).

Mitigation Techniques

Choosing lighter colors and adding mitigation pads into the design may reduce the opportunity for Light Amplification, however, it will not be covered under our standard warranty if Light Amplification occurs.

After installation, the preferred method of storage is that the boat (or any other surface of application) be covered.

SeaDek pads are very durable, but they will last longer, and the color will be preserved if they are not exposed to the elements when not in use. Examples include keeping the boat; in a garage, covered with a canvas boat cover, in a covered boat slip, etc.

Areas to Consider

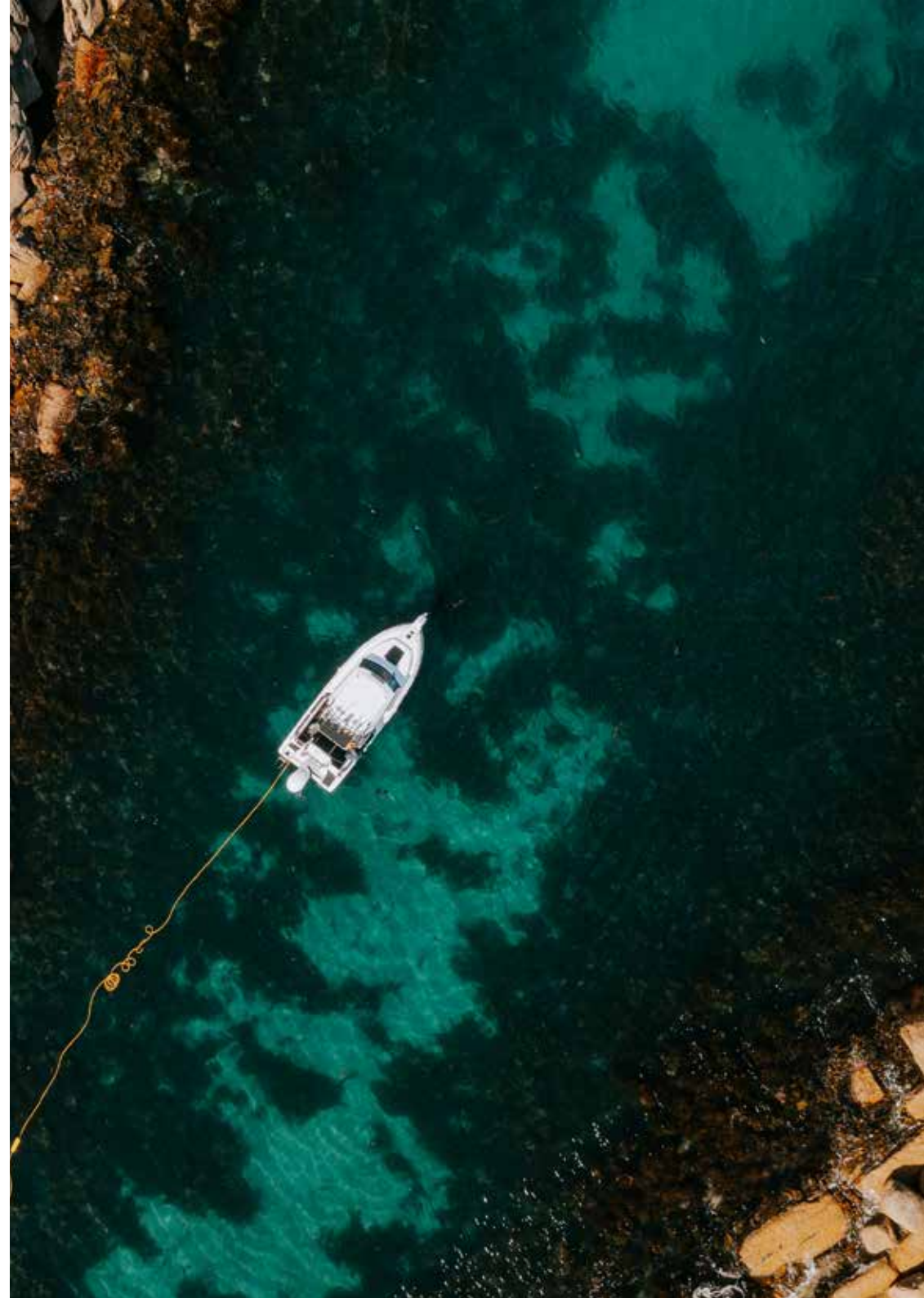
Chrome/Reflective Surfaces Placing SeaDek on or around reflective surfaces such as a windshield or chrome is not recommended. It is recommended to remove objects such as pool toys and water bottles as they have the ability to refract light which can be destructive to the SeaDek.

High Walls

Placing SeaDek in areas with high, reflective walls is another instance where Light Amplification can occur. Applying 3mm thick SeaDek pads along the high walls can aid in combatting the reflection from the sun.

Warranty Considerations

Please see Section II in the SeaDek Limited Warranty on previous page for further details.



GENERAL MAINTENANCE

Your Cruise Craft boat has been built to the most rigid standards by experienced craftsmen using materials of the highest quality - so you own a boat of high finish requiring the minimum of maintenance.

1. Flush engine with fresh water.
2. After use in salt water, remove drain bungs and hose off with fresh water as soon as possible, preferably drying with a chamois. This removes salt from the fittings and maintains the high gloss finish of your deck and hull.
Important Note: Do not use a brush or any coarse material on your windscreens.
3. Should your boat become marked or stained, polish with a good quality wax.
4. Should your canopy or sun top become dirty or stained use only soap and warm water and not detergents.
5. Your seats are covered with a high-quality stretch vinyl. Wipe off after using a damp chamois. Do not stand on them in shoes or leave sharp objects lying on them. Should they become dirty or stained only use soap and warm water for cleaning.
6. Built-in tanks generally have a filter bowl. Check regularly for moisture and dirt. Remove and clean.
7. When required, polish your boat with an approved fibreglass polish (about every two months). Where possible, cover the boat or store in shed when not in use.
8. Please follow the trailer manufactures maintenance recommendations.
9. Please follow Yamaha's engine maintenance recommendations.
10. While getting your annual engine and trailer service ask your Cruise Craft Dealership to carry out your boat maintenance recommendations as listed in the following pages.

HOW TO CLEAN SEADEK

1. To clean dirt, footprints, etc. from your SeaDek, use an all-purpose cleaner, degreaser, or dish soap along with warm water and a medium bristled deck brush. Put the cleaner or soap in warm water. Take a medium bristled brush and dunk into the water mixture. Work around on SeaDek until dirt, etc. comes up. Rinse with clean water. Repeat if necessary.
2. To remove suntan lotion, use the all-purpose cleaner or degreaser alone with a medium bristled deck brush. Put small amount of the cleaner on the oil stain. Dip medium bristled boat brush in warm water and work around until oil is out. Rinse with clean water. Repeat if needed.
3. To remove fish blood, use 1 cup bleach to 1 gallon of warm water and soft bristled boat brush. Mix bleach and water. Take a soft bristled brush and dunk in the mixture. In a circular motion clean SeaDek until fish blood is up. Rinse thoroughly with clean water. Repeat if necessary. If not effective, see step 4.
4. To remove rust stains, use a cap full of vinegar or oxalic acid. Apply on the rust stain and allow to soak for 3-5 minutes. If necessary, use latex/nitrile gloves to massage the cleaner into the texture of the SeaDek pad. Rinse with water. Repeat if necessary.

With oxalic acid, please be careful to avoid getting this solvent on the sides of the SeaDek pad, it could damage the lamination or PSA.

- Please follow your state and/or country regulations for proper chemical handling.
- Please be careful with all cleaning products. Wear vinyl or nitrile gloves and eye protection.

DO NOT USE:

- Mineral Spirits
- Oxalic Acid (not as a general cleaner, okay for Step 4 application only)
- Acetone (if it must be used, avoid the adhesives as best as possible)
- Bleach (if used, dilute 1 cup with 1 gallon of water)

****For best cleaning results, tend to all stains, spills and leaks as soon as possible****

20 HOUR / FIRST SERVICE

Not Applicable	Check/ Adjust	Pre Delivery Service
		Check and torque seat and seat frame screws
		Check operation of bilge pump and float switch
		Check operation of live bait pumps
		Check operation of navigation lights and cockpit lights
		Check operation of the hardtop & cabin lights
		Check steering system for operation and hydraulic leaks
		Check side panels screws security
		Check security of targa or hard top mounts and supports
		Check centre floor board screws are secured
		Shower around window for leaks (Hardtop only)
		Check for Silicone deterioration
		Check hull for air pockets & integrity
		Check battery straps and terminals are tight
		Check operation of circuit breaker
		Check operation of the battery switch
		Check the bung O'Rings and fitting

<p>Dealer Stamp</p>	<p>Date</p>
	<p>Workshop Manager Signature</p>

ANNUAL SERVICE

Not Applicable	Check/ Adjust	Pre Delivery Service
		Check and torque seat and seat frame screws
		Check operation of bilge pump and float switch
		Check operation of live bait pumps
		Check trim tab system operation (if fitted)
		Check operation of navigation lights and cockpit lights
		Check operation of the hardtop & cabin lights
		Check steering system for operation and hydraulic leaks
		Check side panels screws security
		Check security of targa or hard top mounts and supports
		Check centre floor board screws are secured
		Check side window screws are secured (Hardtop models)
		Check wiper function & adjustment (if fitted)
		Check for Silicone deterioration around windows
		Check battery straps and terminals are tight and secure
		Check operation of circuit breakers and is free of corrosion
		Check battery switch operation and is free of corrosion
		Check the bung & drain O'Rings condition and fitting

Dealer Stamp

Date

Workshop Manager Signature

ANNUAL SERVICE

Not Applicable	Check/ Adjust	Pre Delivery Service
		Check and torque seat and seat frame screws
		Check operation of bilge pump and float switch
		Check operation of live bait pumps
		Check trim tab system operation (if fitted)
		Check operation of navigation lights and cockpit lights
		Check operation of the hardtop & cabin lights
		Check steering system for operation and hydraulic leaks
		Check side panels screws security
		Check security of targa or hard top mounts and supports
		Check centre floor board screws are secured
		Check side window screws are secured (Hardtop models)
		Check wiper function & adjustment (if fitted)
		Check for Silicone deterioration around windows
		Check battery straps and terminals are tight and secure
		Check operation of circuit breakers and is free of corrosion
		Check battery switch operation and is free of corrosion
		Check the bung & drain O'Rings condition and fitting

Dealer Stamp

Date

Workshop Manager Signature

ANNUAL SERVICE

Not Applicable	Check/ Adjust	Pre Delivery Service
		Check and torque seat and seat frame screws
		Check operation of bilge pump and float switch
		Check operation of live bait pumps
		Check trim tab system operation (if fitted)
		Check operation of navigation lights and cockpit lights
		Check operation of the hardtop & cabin lights
		Check steering system for operation and hydraulic leaks
		Check side panels screws security
		Check security of targa or hard top mounts and supports
		Check centre floor board screws are secured
		Check side window screws are secured (Hardtop models)
		Check wiper function & adjustment (if fitted)
		Check for Silicone deterioration around windows
		Check battery straps and terminals are tight and secure
		Check operation of circuit breakers and is free of corrosion
		Check battery switch operation and is free of corrosion
		Check the bung & drain O'Rings condition and fitting

Dealer Stamp

Date

Workshop Manager Signature

ANNUAL SERVICE

Not Applicable	Check/ Adjust	Pre Delivery Service
		Check and torque seat and seat frame screws
		Check operation of bilge pump and float switch
		Check operation of live bait pumps
		Check trim tab system operation (if fitted)
		Check operation of navigation lights and cockpit lights
		Check operation of the hardtop & cabin lights
		Check steering system for operation and hydraulic leaks
		Check side panels screws security
		Check security of targa or hard top mounts and supports
		Check centre floor board screws are secured
		Check side window screws are secured (Hardtop models)
		Check wiper function & adjustment (if fitted)
		Check for Silicone deterioration around windows
		Check battery straps and terminals are tight and secure
		Check operation of circuit breakers and is free of corrosion
		Check battery switch operation and is free of corrosion
		Check the bung & drain O'Rings condition and fitting

Dealer Stamp

Date

Workshop Manager Signature

OWNERS RECORD

Important: For your own convenience, we recommend that you accurately record the below information so that should your boat be stolen or lost, you have a complete personal record of all relevant details.

Date of Purchase _____

Dealer _____

Boat Serial/HIN No. _____

Boat Rego No. _____

Trailer VIN No. _____

Trailer Rego No. _____

Engine Serial No. _____

WARRANTY TRANSFER

Important: For your own convenience, we recommend that you accurately record the below information. Scan and email a copy of both pages to info@cruisecraft.com.au

Date of Purchase _____

Purchaser Name _____

Address _____

Boat Serial/HIN No. _____

Boat Rego No. _____

Trailer VIN No. _____

Mobile _____

Engine Serial No. _____

Email _____

TRANSFERABLE WARRANTY

You can transfer the balance of the remaining warranty into your name but the Cruise Craft factory MUST BE notified within 30 days from your date of purchase. Please email Boat HIN, Motor Serial no. & Trailer VIN + your FULL name, Address & Mobile to info@cruisecraft.com.au



JOIN TEAM CRUISE CRAFT

At Cruise Craft Boats, our mission is to foster a vibrant community of boat owners who share their experiences and passion for boating. Through our factory-backed events, we bring together like-minded individuals to connect, share stories, and enjoy camaraderie over a cold ale and a feed.

These gatherings also serve as a platform to provide our valued members with up-to-date product information on all things Yamaha, Garmin, and Cruise Craft, while also taking on board customer feedback.

The event itself presents the ability to win epic prizes, and also serve as the perfect launchpad for introducing new products. Providing existing and potential new customers with firsthand insights.

With over 79 years of dedication to not only building boats but also cultivating a thriving boating community, we continue to unite enthusiasts and celebrate the joy of boating together.

Defining Excellence Since 46

www.cruisecraft.com.au/teamcruisecraft



RELIABILITY  STARTS HERE

Manufactured by CRUISE CRAFT BOATS Pty Ltd

35 Alexandra Place, Murarrie, Queensland, Australia

4172

P.O. Box 301, Wynnum, Queensland, Australia 4178

Ph: 07 3390 4877

info@cruisecraft.com.au

www.cruisecraft.com.au

www.cruisecraft.com.au/teamcruisecraft